



THE UNIVERSITY *of* EDINBURGH
Social Responsibility & Sustainability

Barvick Burn Wood Annual Community Meeting Wednesday 18 March 2026

David Bruce – Forest and Peatland Programme Manager
Lewis O'Dea – Forest Site Manager
Julie Wilson – Community Ranger



THE UNIVERSITY *of* EDINBURGH
Social Responsibility & Sustainability



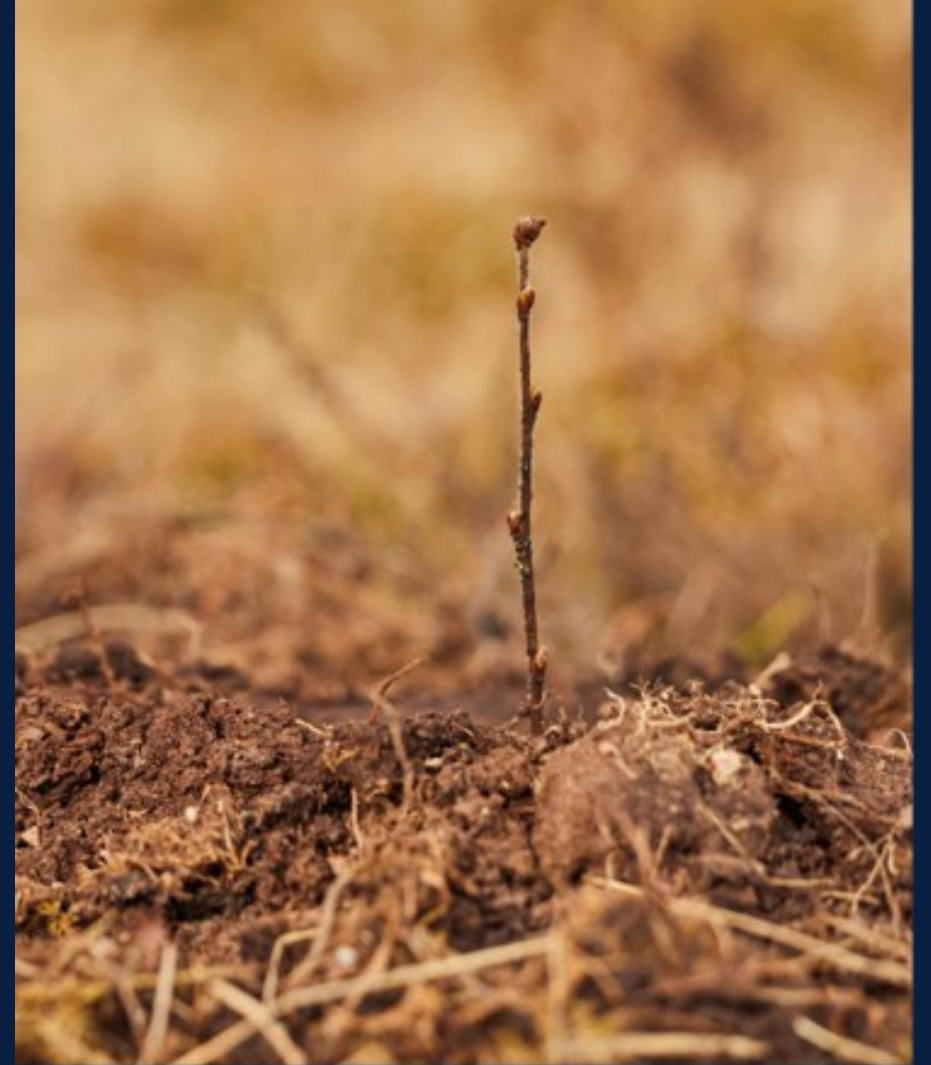
Social Responsibility & Sustainability



uoe_sustainability

Overview

- Research in action
- Overview of the Forest and Peatland Programme
- Progress at Barvick Burn Wood
- Learning, teaching and research
- Volunteering and outdoor learning
- Q&A



Social research: reality of restoration

How do you interact with Barvick Burn as a woodland creation site?

Focus: Relationship to people and place

- What are the **local experiences** of FPP projects?
- How is the woodland creation carried out and who is **involved** in the process?
- What does this mean for **monitoring** social changes?



'Go-along' method: Interviews and note-taking

*If interested in learning more or taking part – please speak to me &/ or contact:
Rachel Orchard – R.T.Orchard@sms.ed.ac.uk*



Why the University needs the Forest & Peatland Programme



Travel is essential for teaching & research

Sequestering over 1 million tonnes of CO₂



Only offsetting unavoidable aviation emissions

Student assurance - your travel emissions are mitigated



Actions we're taking now: leveraging Scotland's natural Capital



Forest and Peatland Programme

Three project strands:



Land acquisition of 891ha

Woodland creation at three sites



Woodland creation partnerships

Native or mixed, 50-year partnerships



Peatland restoration partnerships

50-year partnerships



THE UNIVERSITY of EDINBURGH
Social Responsibility & Sustainability

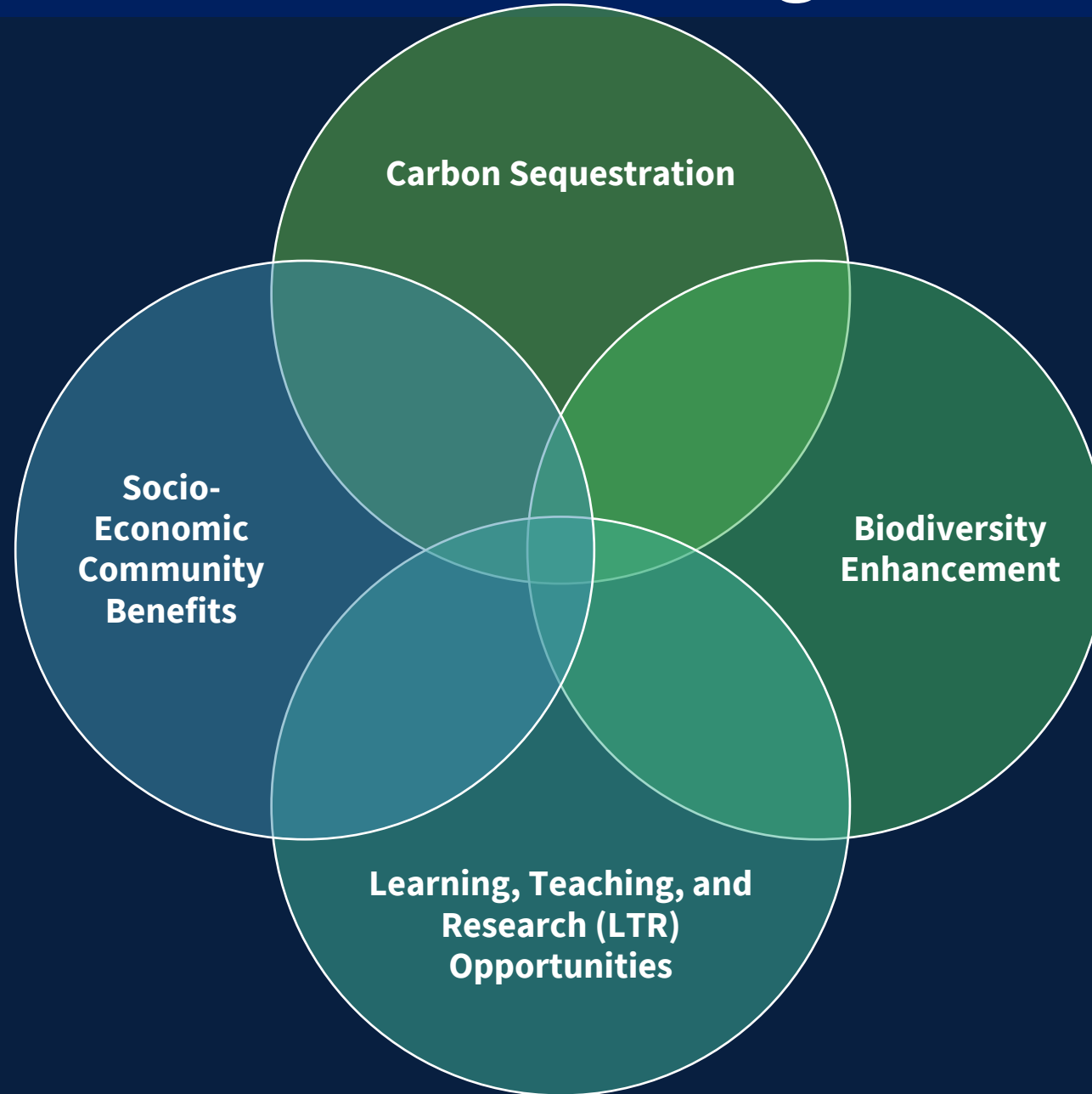


Social Responsibility & Sustainability



uoe_sustainability

Multi-Benefit Programme



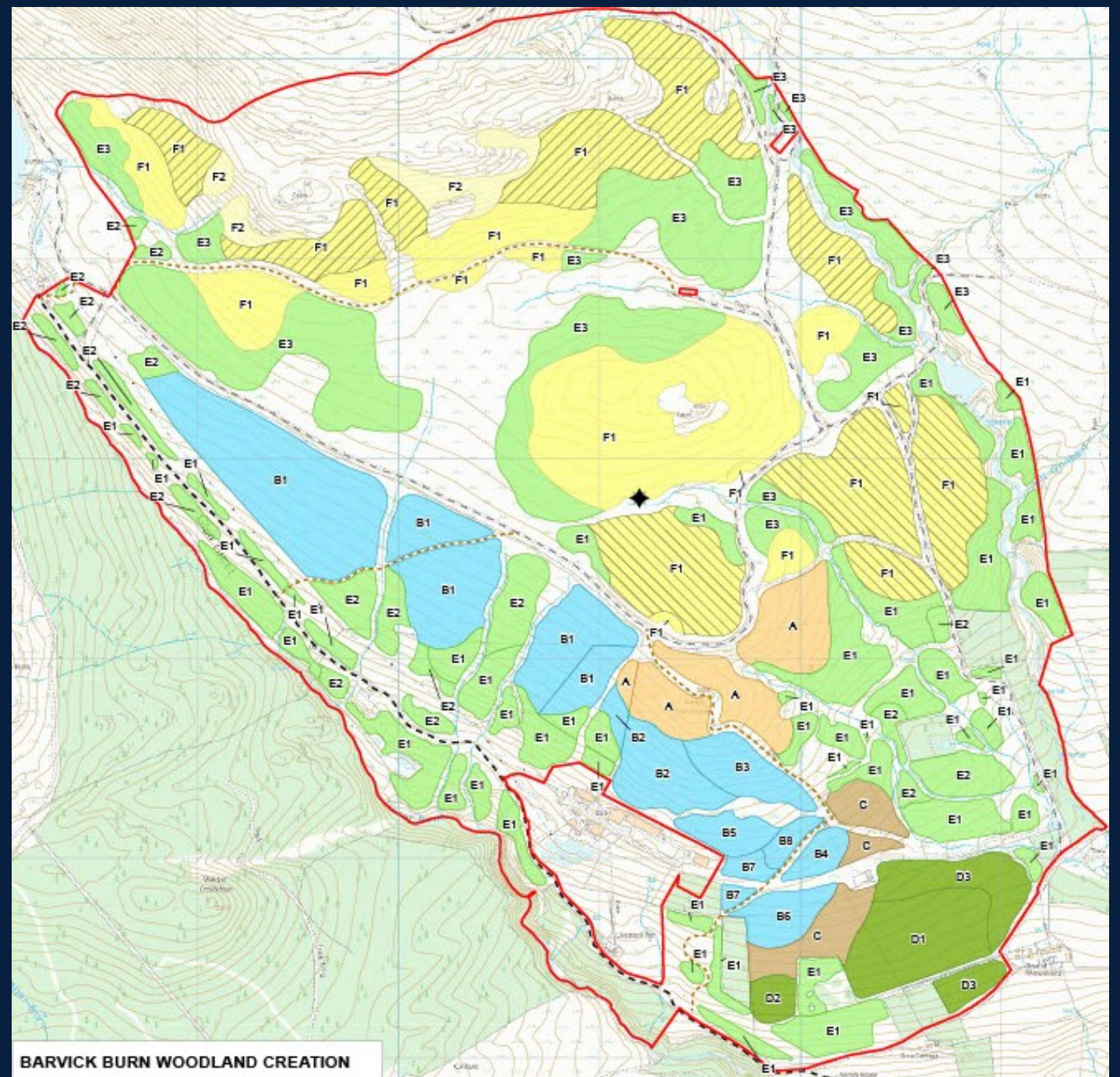
Woodland design

Woodland design

- A** - Scots Pine woodland (SP 95%, SBI 5%)
- B1** - Norway Spruce/Fir mix (NS 35%, NF 35%, RF 15%, MCP 10%, PBI 5%)
- B2** - Cedar/Fir mix (NF 50%, RC 50%)
- B3** - Spruce mix (NS 50%, OMS 50%)
- B4** - Cedar mix (RC 70%, JCR 30%)
- B5** - Douglas Fir/Redwood (DF 70%, GRW 30%)
- B6** - PS Fir/Redwood (RF 50%, GRW 50%)
- B7** - Douglas Fir (DF 100%)
- B8** - Noble Fir (NF 100%)
- C** - Mixed woodland (SP 20%, GF 20%, BE 20%, SY 20%, RC 10%, NOM 10%)
- D1** - Broadleaved woodland (SOK 50%, SBI 45%, WCH 2.5%, SC 2.5%)
- D2** - Broadleaved woodland (SY 85%, NOM 5%, WCH 5%, ASP 5%)
- D3** - Broadleaved woodland (SBI 47.5%, ASP 47.5%, WCH 5%)
- E1** - Native broadleaved woodland (NVC W11/W17)
- E2** - Wet woodland (NVC W4/W7)
- E3** - Upland birch (NVC W4)
- F1** - Native Scots Pine (NVC W18)
- F2** - Juniper mix (NVC W19)

F1 density

- Higher density
- Lower density



BARVICK BURN WOODLAND CREATION

Woodland summary

Total site area	435 ha	100%
Planted	259 ha	60%
Open	161 ha	37%
Existing woodland	15 ha	3%
Total planting area	259 ha	100%
Native broadleaves	97 ha	38%
Native Scots pine	90 ha	35%
Mixed woodland	5 ha	2%
Scots Pine mix	11 ha	4%
Diverse conifer mix	42 ha	16%
Productive broadleaves	13 ha	5%



Site operations

- Work started in Dec 2025
- Ground preparation underway
- Deer fencing underway
- Partial tree planting in spring 2026.
- Tree planting will resume in winter 2026/2027 to complete.



Fencing



Gates and draft signage

Please close the gate behind you
to prevent deer from entering

Public access gate map

The University of Edinburgh has planted a variety of trees within these fenced areas to enhance biodiversity and capture carbon.

You are welcome to enjoy these areas responsibly.

Thanks for your cooperation in protecting this developing woodland.



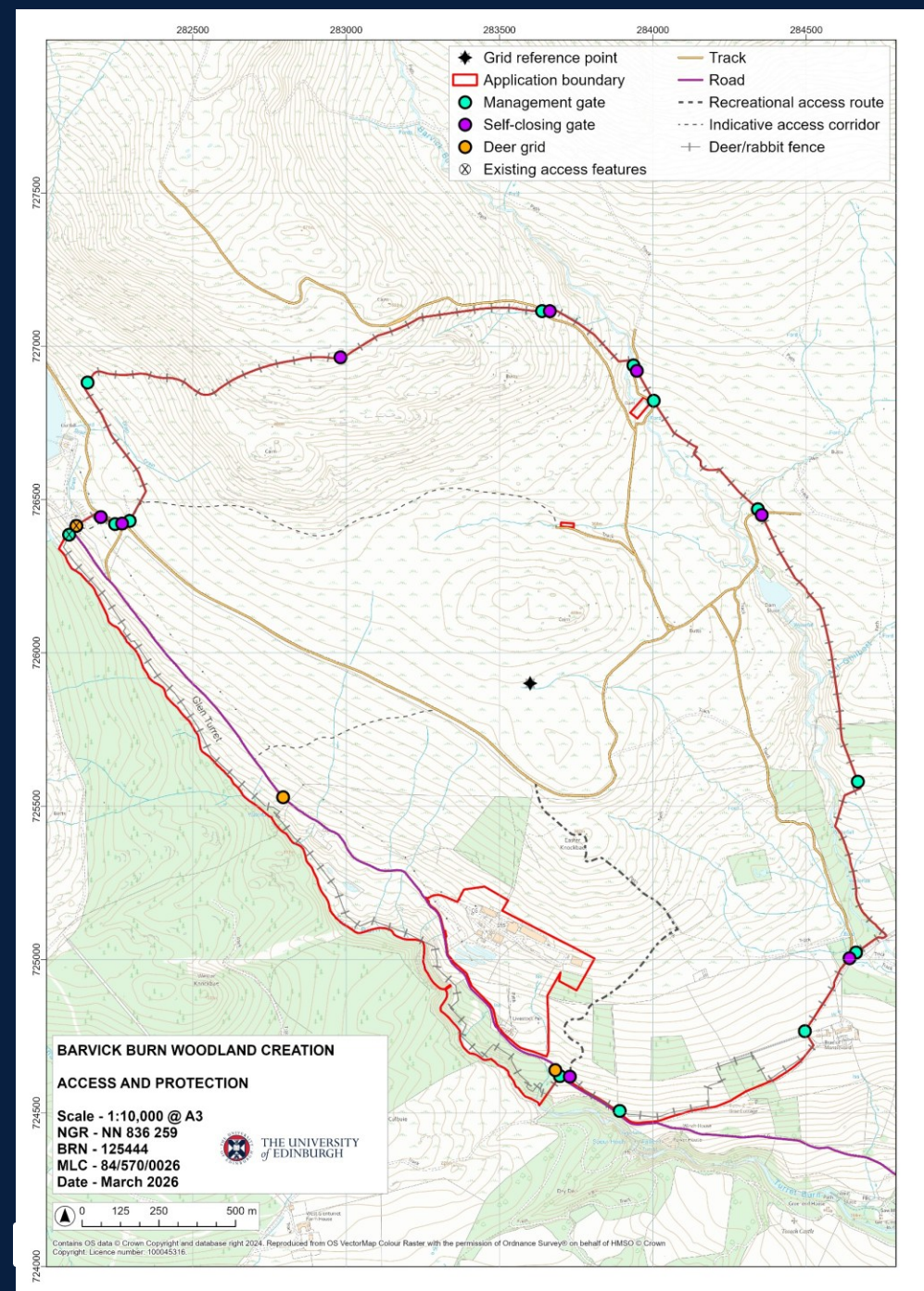
THE UNIVERSITY
of EDINBURGH

edin.ac/barvick
Community.Ranger@ed.ac.uk



Stay safe on the hills. In an emergency call 999 or 112 and ask for Police and then Mountain Rescue. Scottish Mountain Rescue volunteers are on call 365 days a year, any hour, any day, any weather.

The University of Edinburgh is a charitable body, registered in Scotland, with registration number SC005336.



BARVICK BURN WOODLAND CREATION

ACCESS AND PROTECTION

Scale - 1:10,000 @ A3
NGR - NN 836 259
BRN - 125444
MLC - 84/570/0026
Date - March 2026



0 125 250 500 m

Contains OS data © Crown Copyright and database right 2024. Reproduced from OS VectorMap Colour Raster with the permission of Ordnance Survey® on behalf of HMSO © Crown Copyright. Licence number: 100045316.

Ground Preparation

Creating individual raised mounds to help trees establish

Using different techniques to create mounds





Tree Planting

535,000 trees to be planted



Other future site works planned :

Interpretation panels at key locations

Small number of additional parking spaces.



The Battle of Rullion Green

Ahead of you, on the slopes of Turnhouse Hill, a bloody skirmish took place on 28 November 1666, as part of the Pentland Uprising.

Who fought here?

On 28 November 1666, the Covenanters, an extreme form of Presbyterianism, fought the Battle of Rullion Green. They had hoped to gain support in Edinburgh but were defeated. The battle was recommended by General James Douglas and Major-General William Drummond.



A depiction of the battle, made in the 19th century.

Why were they fighting?

This was the only battle of the Pentland Uprising. King Charles II had attempted to impose the Episcopal form of church government in Scotland, leading to widespread resistance. Those opposing the king's policies were known as Covenanters. When, in 1666, the king's troops destroyed the crops of an elderly man for not attending church, many people – from places like Kirkcaldy, Ardeer and Dumfries – took up arms.



Charles II (1630-1685), by Sir Godfrey Kneller.



Map of the battle site.

Who won?

This battle was a decisive victory for the King. Around fifty Covenanters were killed and many more were taken prisoner. Some of these people were executed and others were transported to Barbados. The Pentland Uprising was suppressed but the wider conflict continued.

Martyrs' monument

This gravestone was erected in 1728 – one of numerous memorials to Covenanters who lost their lives that day. You can find the monument using our maps: [leave.covense.org](#)



Rullion Green Wood

At Rullion Green Wood, the University of Edinburgh is working to restore the woodland to its former glory. The wood is home to many rare plants and animals.

Over 20,000 trees have been planted in the wood since 2010. The wood is home to many rare plants and animals.

Look out for the woodpecker, the redstart and the blue tit. The wood is also home to many rare plants and animals.

Look out for the woodpecker, the redstart and the blue tit. The wood is also home to many rare plants and animals.

Look out for the woodpecker, the redstart and the blue tit. The wood is also home to many rare plants and animals.

Look out for the woodpecker, the redstart and the blue tit. The wood is also home to many rare plants and animals.

Look out for the woodpecker, the redstart and the blue tit. The wood is also home to many rare plants and animals.

Look out for the woodpecker, the redstart and the blue tit. The wood is also home to many rare plants and animals.

Look out for the woodpecker, the redstart and the blue tit. The wood is also home to many rare plants and animals.

Look out for the woodpecker, the redstart and the blue tit. The wood is also home to many rare plants and animals.

Look out for the woodpecker, the redstart and the blue tit. The wood is also home to many rare plants and animals.

Look out for the woodpecker, the redstart and the blue tit. The wood is also home to many rare plants and animals.

Look out for the woodpecker, the redstart and the blue tit. The wood is also home to many rare plants and animals.

Look out for the woodpecker, the redstart and the blue tit. The wood is also home to many rare plants and animals.

Look out for the woodpecker, the redstart and the blue tit. The wood is also home to many rare plants and animals.

Look out for the woodpecker, the redstart and the blue tit. The wood is also home to many rare plants and animals.



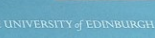
Woodpecker



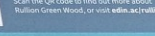
Woodpecker seed



Woodpecker tree



Woodpecker tree



Woodpecker tree



Woodpecker tree



Woodpecker tree



Woodpecker tree



Forests and Peatland Project:
Learning, teaching
and research strategy

From 2023 until 2028

Learning, Teaching, and Research (LTR)

Field trips –
experiential
learning

Student studies –
dissertations/PhDs



Support monitoring
and reporting

Research projects



Living labs



Learning & Teaching

- Field trips - Ecological Measurement course - annual vegetation survey



Video available



PhD students

3 PhD students looking at carbon, biodiversity and community benefits.

Collecting soil samples and vegetation data from Barvick.

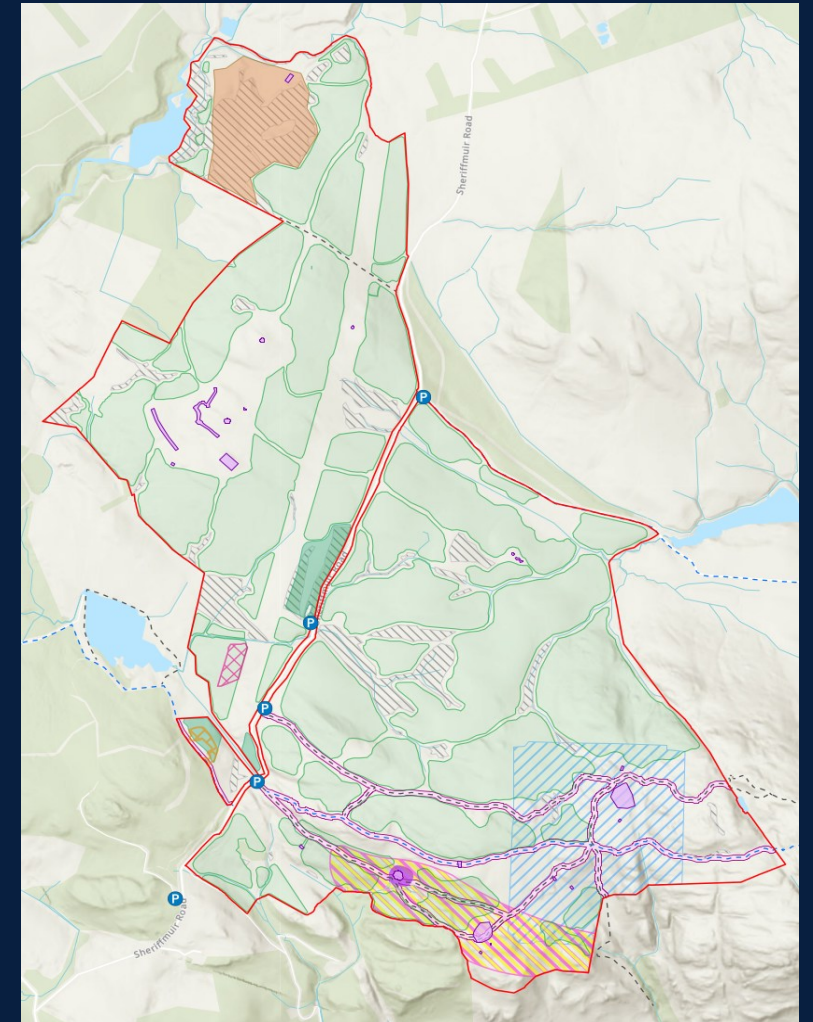
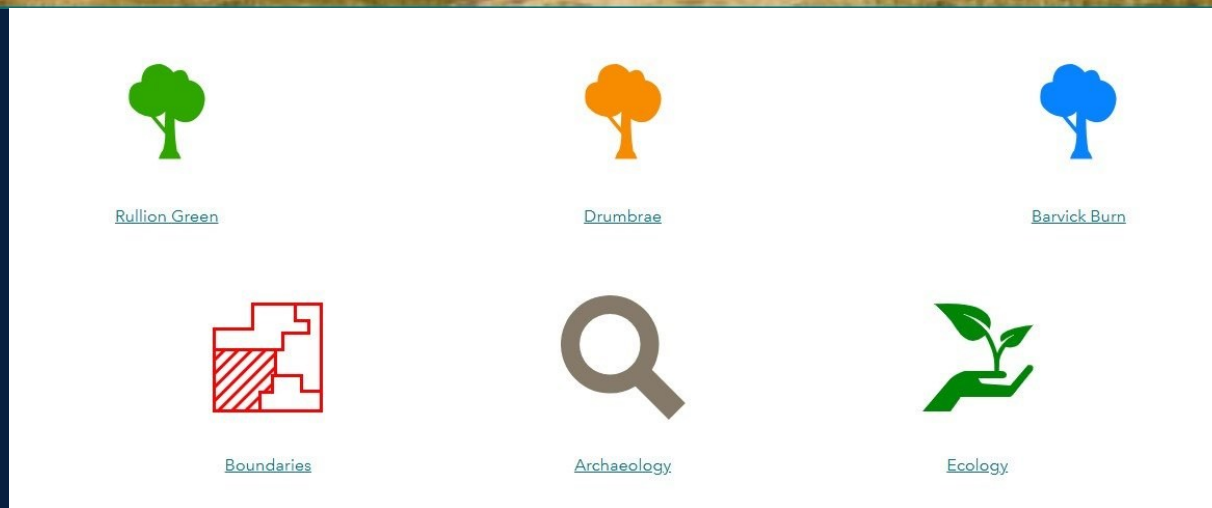
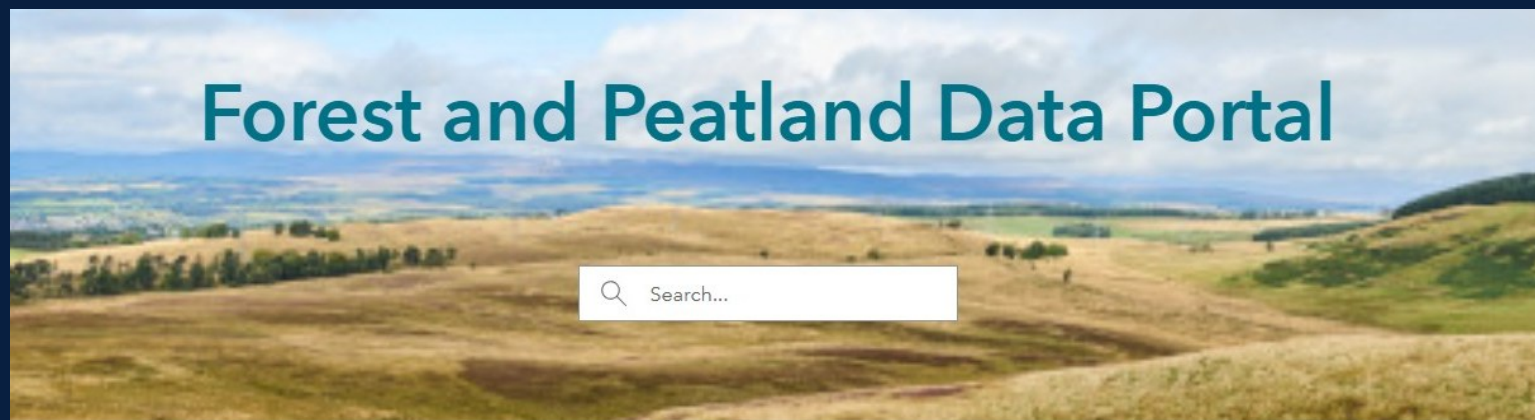


Site Monitoring and Research

- Using our baseline data for monitoring, including remote sensing using drones.
- Forest Research trial plots
- Biochar and rhizocore trial planting
- Fixed point photography
- Citizen science



Forest and Peatland Programme resources: Data and Research from our sites



- Aiming to make research data openly available with as few restrictions as possible in a timely and responsible manner.

Volunteering at Barvick Burn



Want to get involved?

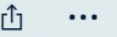
- Visit our website for all volunteering opportunities.
edin.ac/fpp-volunteer
- Sign up to our mailing list to be notified of upcoming events and activities via email.
- Tasks could include tree maintenance, wildflower and tree planting, citizen science.
- Volunteering at Barvick will begin once site operations are coming to an end.



Outdoor Learning



Story Map



THE UNIVERSITY
of EDINBURGH

Collection

Rullion Green

Get started



1 Introduction



2 Nature



3 History and Archaeology



4 Woodland creation



5 Visiting Rullion Green



6 Volunteering



THE UNIVERSITY of EDINBURGH
Social Responsibility & Sustainability



Social Responsibility & Sustainability



uoe_sustainability



FEEDBACK



Questions?

Community.Ranger@ed.ac.uk

 Social Responsibility & Sustainability

 EdinburghSustainability

 UoE_Sustainability

edin.ac/barvick

