

# Community Meeting

## Woodland creation at Rullion Green

25th Feb 2025



THE UNIVERSITY of EDINBURGH  
Social Responsibility & Sustainability



Social Responsibility & Sustainability



uoe\_sustainability



edsust



# Overview

- Overview of the Forest and Peatland Programme
- Progress at Rullion Green Wood
- Learning, teaching and research
- Community Activity Area
- Q&A





# Forest and Peatland Programme

## Three project strands:



### Land acquisition of 891ha

Woodland creation and/or peatland restoration



### Woodland creation partnerships

Native or mixed, 50-year partnerships



### Peatland restoration partnerships

50-year partnerships



THE UNIVERSITY of EDINBURGH  
Social Responsibility & Sustainability



Social Responsibility & Sustainability



uoe\_sustainability



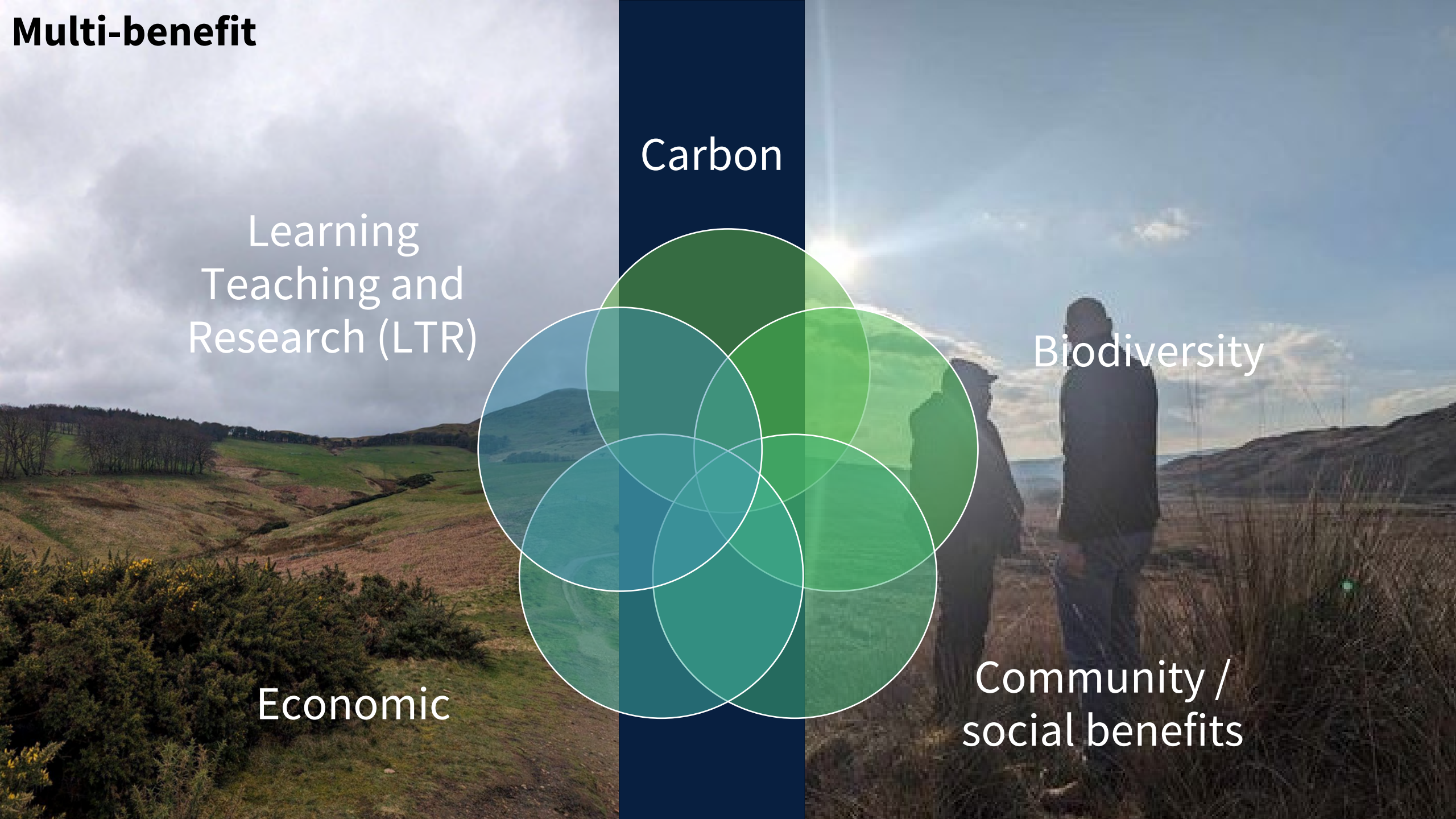
edsust

# Why the University needs Forests & Peatlands Programme

- By 2040 to be net zero. FPP programme will match our expected unavoidable climate emissions from all travel by sequestering and mitigate 1 million tonnes of carbon dioxide
- As a large educational institution, emissions from travel occur as part of teaching & research
- We want **students to travel to their university knowing that their travel emissions are being mitigated** through woodland creation and peatland restoration
- Our commitment is to **only offset what we consider unavoidable emissions from aviation** and to reduce the rest to zero.
- **Tools** available to do what we can now: natural capital in Scotland.







# Multi-benefit

Carbon

Learning  
Teaching and  
Research (LTR)

Biodiversity

Economic

Community /  
social benefits





# THE UNIVERSITY *of* EDINBURGH Social Responsibility & Sustainability

## Forest and Peatland Team

David Bruce, Forest and Peatland Manager  
Yvonne Edwards, Development Manager

Lewis O'Dea, Forest Site Manager  
Dr Annie Yang, Academic Manager

Julie Wilson, Community Ranger  
Amy Russell, Geospatial Analyst



THE UNIVERSITY *of* EDINBURGH  
Social Responsibility & Sustainability



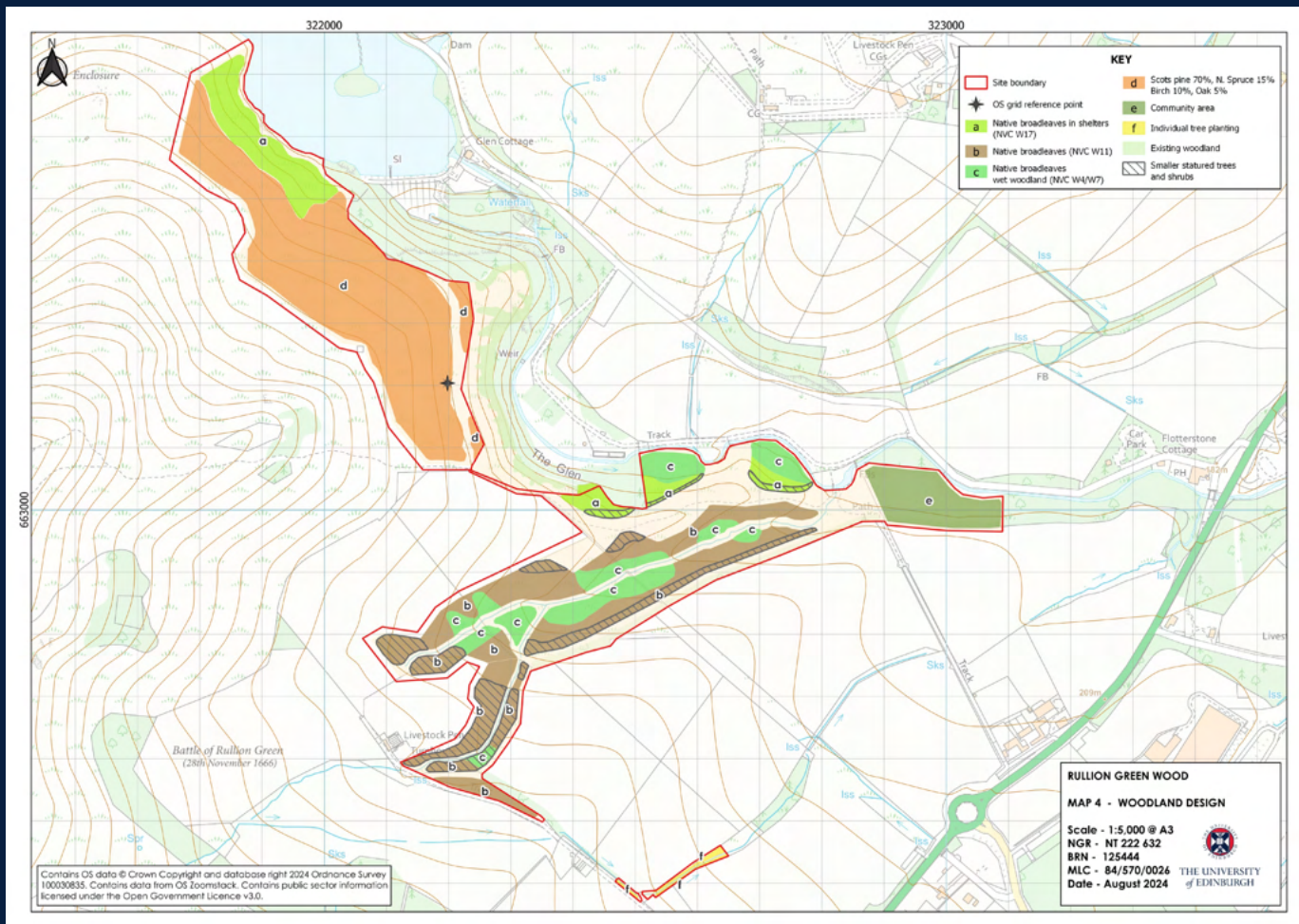
Social Responsibility & Sustainability



uoe\_sustainability



# Rullion Green Woodland Design



# Woodland Summary

<b>Total site area</b>	<b>29.7 ha</b>	<b>100%</b>
Planted	18.8 ha	63%
Community Activity Area	1.4 ha	5%
Open	9.5 ha	32 %
<b>Total planting area</b>	<b>18.8 ha</b>	<b>100%</b>
Native broadleaves	10.5 ha	56%
Scots Pine mix	8.3 ha	44%





# Fences and gates

Fences protect young trees from being browsed by deer.  
Gates are provided to allow access.





# Ground preparation

Ground preparation helps the young saplings establish.  
Mounding creates a raised, weed-free planting position.





# Tree planting

Over 37,000 trees planted.

Species include: oak, birch, rowan, alder, aspen, Scots pine and Norway spruce.







THE UNIVERSITY of EDINBURGH



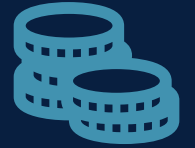
## Forests and Peatland Project: Learning, teaching and research strategy

From 2023 until 2028

# Learning, Teaching, and Research (LTR)

Field trips –  
experiential  
learning

Student studies –  
dissertations/PhDs



Support monitoring  
and reporting

Research projects



Living labs



Social Responsibility & Sustainability

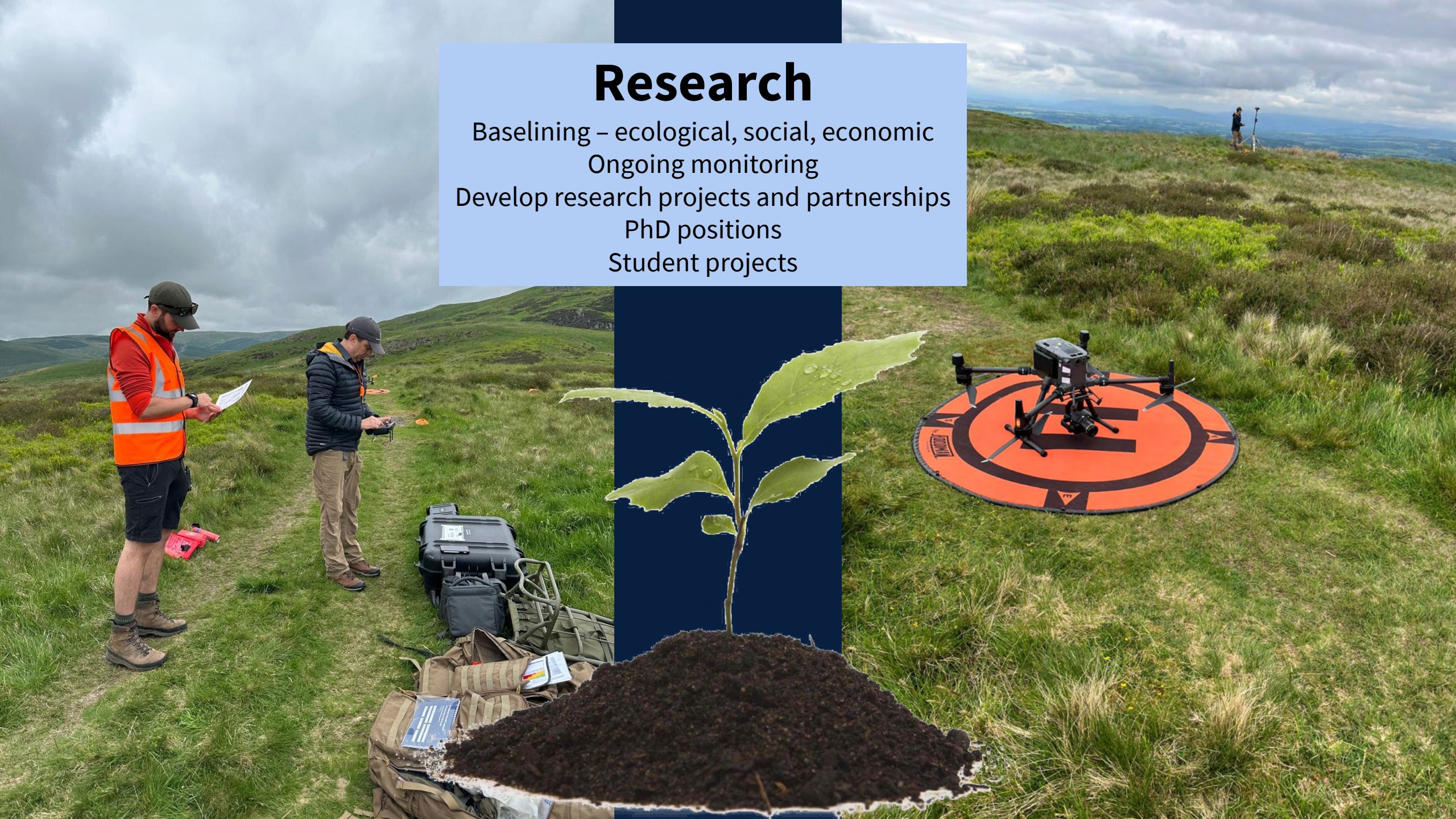


uoe\_sustainability



# Research

Baselining – ecological, social, economic  
Ongoing monitoring  
Develop research projects and partnerships  
PhD positions  
Student projects





# Community Benefits & Engagement



THE UNIVERSITY of EDINBURGH  
Social Responsibility & Sustainability



Social Responsibility & Sustainability



uoe\_sustainability



# Gate signage

Signage will be provided on each gate.

Everyone is welcome to enjoy these areas responsibly.

Share your feedback on these signs!

**Please close the gate behind you  
to prevent deer from entering**

## Public access gate map

The University of Edinburgh is planting a variety of trees within these fenced areas to enhance biodiversity and capture carbon.

You are welcome to enjoy these areas responsibly.

Thanks for your cooperation in protecting this developing woodland.



THE UNIVERSITY  
of EDINBURGH

**edin.ac/rullion**  
Community.Ranger@ed.ac.uk



The University of Edinburgh is a charitable body, registered in Scotland, with registration number SC005336.



THE UNIVERSITY of EDINBURGH  
Social Responsibility & Sustainability



Social Responsibility & Sustainability



uoe\_sustainability



# The Battle of Rullion Green

On the slopes of Turnhouse Hill, around the treeline ahead of you, the Battle of Rullion Green took place on 27 November 1666.

## What happened here?

A bloody skirmish took place. On one side were the Covenanters – an informal army of likeminded people from the south of Scotland, led by Col. James Wallace of Auchens. Their aim was to gain support in Glasgow and Edinburgh, but they were forced south to Rullion Green, where they were met by the cavalry and guns of the Scottish Government, led by Major Gen. William Drummond.

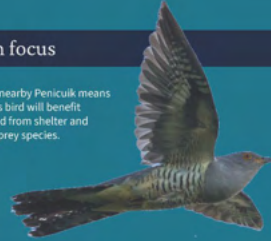


Image caption.



## Woodland in focus

**Cuckoo** – the name of nearby Penicuik means 'hill of the cuckoo'. This bird will benefit from the new woodland from shelter and increased numbers of prey species.



**Aspen** – planted here as part of the woodland creation. Listen for its leaves trembling in the wind.



**Willow** – this tree flowers early and is important for many pollinating insects such as ladybirds.



THE UNIVERSITY of EDINBURGH

The University of Edinburgh owns this 30-hectare site within the Pentland Hills Regional Park. We want to enhance biodiversity on the site by creating woodlands and improving habitats for plants and animals. The project will provide opportunities for local communities, students and researchers whilst mitigating some of the University's carbon emissions.



Scan the QR code or visit [edin.ac/rullion](http://edin.ac/rullion) to discover more about this fascinating landscape.

## What was the Pentland Uprising?



King Charles II had attempted to impose the Episcopal religion in place of Presbyterianism in Scotland, leading to widespread resistance. Those opposing his reforms were known as Covenanters. When, in 1666, the King's troops destroyed the crops of an elderly man for not attending church, many people – from places like Kirkcudbright, Ayr and Dumfries – took up arms.

Image caption.

## Who won?

This battle was a decisive victory for the King. But although it suppressed the Pentland Uprising, the wider conflict continued. Around 50 Covenanters were killed. Many more were taken prisoner – some of these were executed, and others were transported to Barbados.

### Martyr's tomb

This gravestone was erected in 1739 – one of numerous memorials to Covenanters who lost their lives that day.

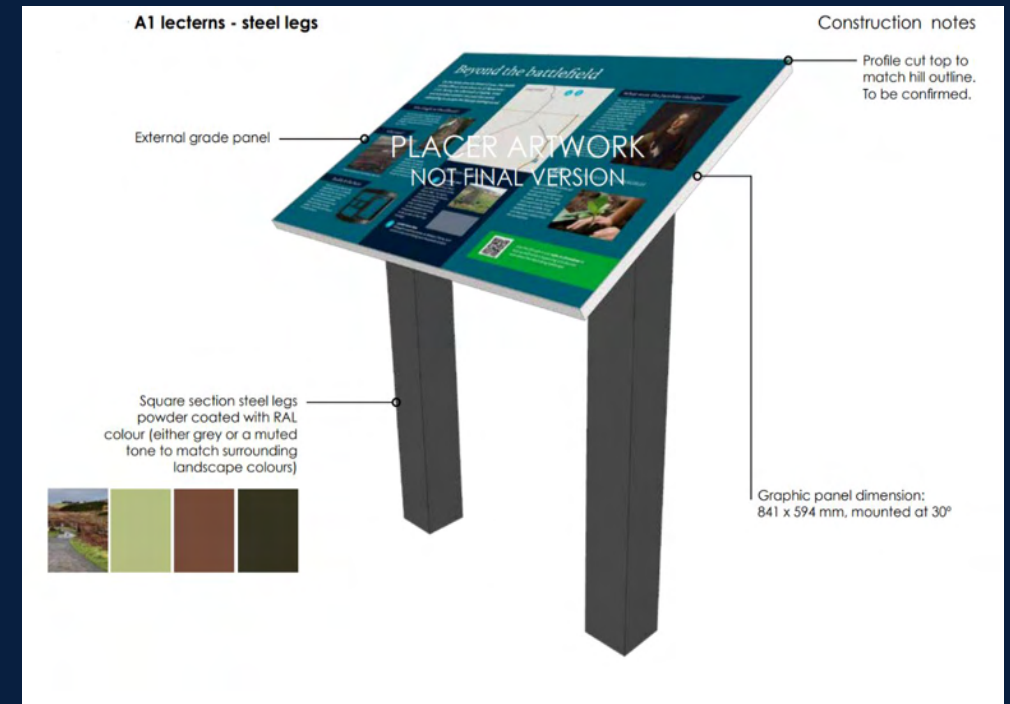
It stands in the surrounding hillside at: [battle was here](#)



# Interpretation panel

Will be next to Turnhouse hill path.

Share your feedback on our first draft!



THE UNIVERSITY of EDINBURGH  
Social Responsibility & Sustainability



Social Responsibility & Sustainability



[uoe\\_sustainability](#)



# Story Map – coming soon!



THE UNIVERSITY  
of EDINBURGH

Collection

## Drumbrae

Get started



1 Introduction



2 Nature



3 Archaeology



4 Woodland Design



5 Community at Drumbrae



THE UNIVERSITY of EDINBURGH  
Social Responsibility & Sustainability



Social Responsibility & Sustainability



uoe\_sustainability



# Community Activity Area

Ideas,  
aspirations,  
uses.



THE UNIVERSITY of EDINBURGH  
Social Responsibility & Sustainability



Social Responsibility & Sustainability



uoe\_sustainability



# What would you like to see here?



THE UNIVERSITY of EDINBURGH  
Social Responsibility & Sustainability



Social Responsibility & Sustainability



uoe\_sustainability



# Q&A

Community.Ranger@ed.ac.uk

edin.ac.uk/Drumbrae



Social Responsibility & Sustainability



UoE\_Sustainability



THE UNIVERSITY of EDINBURGH  
Social Responsibility & Sustainability



Social Responsibility & Sustainability



uoe\_sustainability