



THE UNIVERSITY *of* EDINBURGH
Social Responsibility & Sustainability

Community Meeting

Woodland creation at Drumbrae

22nd Nov 2024



THE UNIVERSITY *of* EDINBURGH
Social Responsibility & Sustainability



Social Responsibility & Sustainability



uoe_sustainability



edsust

Overview

- Overview of the Forest and Peatland Programme
- Progress at Drumbrae
- Learning, teaching and research
- Community Activities and Volunteering
- Cocksburn Community Woodland
- Q&A



Forest and Peatland Programme

Three project strands:



Woodland creation across
three owned sites



50-year partnerships. Carbon rights paid over 30 years.



THE UNIVERSITY of EDINBURGH
Social Responsibility & Sustainability



Social Responsibility & Sustainability



uoe_sustainability

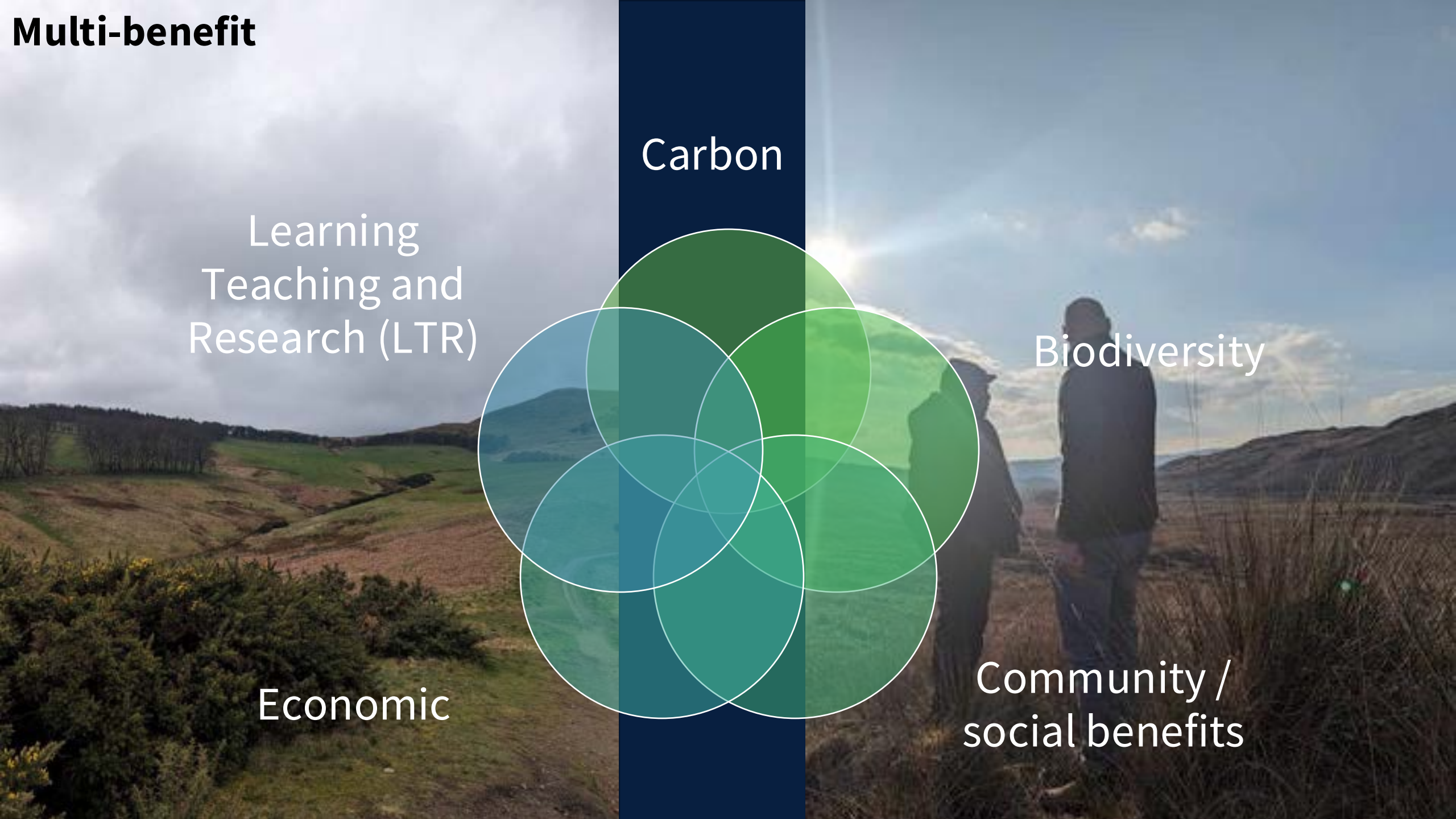


edsust

Why the University needs Forests & Peatlands Programme

- By 2040 to be net zero. FPP programme will match our expected unavoidable climate emissions from all travel by sequestering and mitigate 1 million tonnes of carbon dioxide
- As a large educational institution, emissions from travel occur as part of teaching & research
- We want **students to travel to their university knowing that their travel emissions are being mitigated** through woodland creation and peatland restoration
- Our commitment is to **only offset what we consider unavoidable emissions from aviation** and to reduce the rest to zero.
- **Tools** available to do what we can now: natural capital in Scotland.





Multi-benefit

Learning
Teaching and
Research (LTR)

Carbon

Biodiversity

Economic

Community /
social benefits





THE UNIVERSITY *of* EDINBURGH Social Responsibility & Sustainability

Forest and Peatland Team

David Bruce, Forest and Peatland Manager

Lewis O'Dea, Forest Site Manager

Dr Annie Yang, Academic Manager

Yvonne Edwards, Development Manager

Julie Wilson, Community Ranger

Amy Russell, Geospatial Analyst

Misti Cooper, Project Coordinator

Matt Holt, Assistant Project Coordinator



THE UNIVERSITY *of* EDINBURGH
Social Responsibility & Sustainability



Social Responsibility & Sustainability

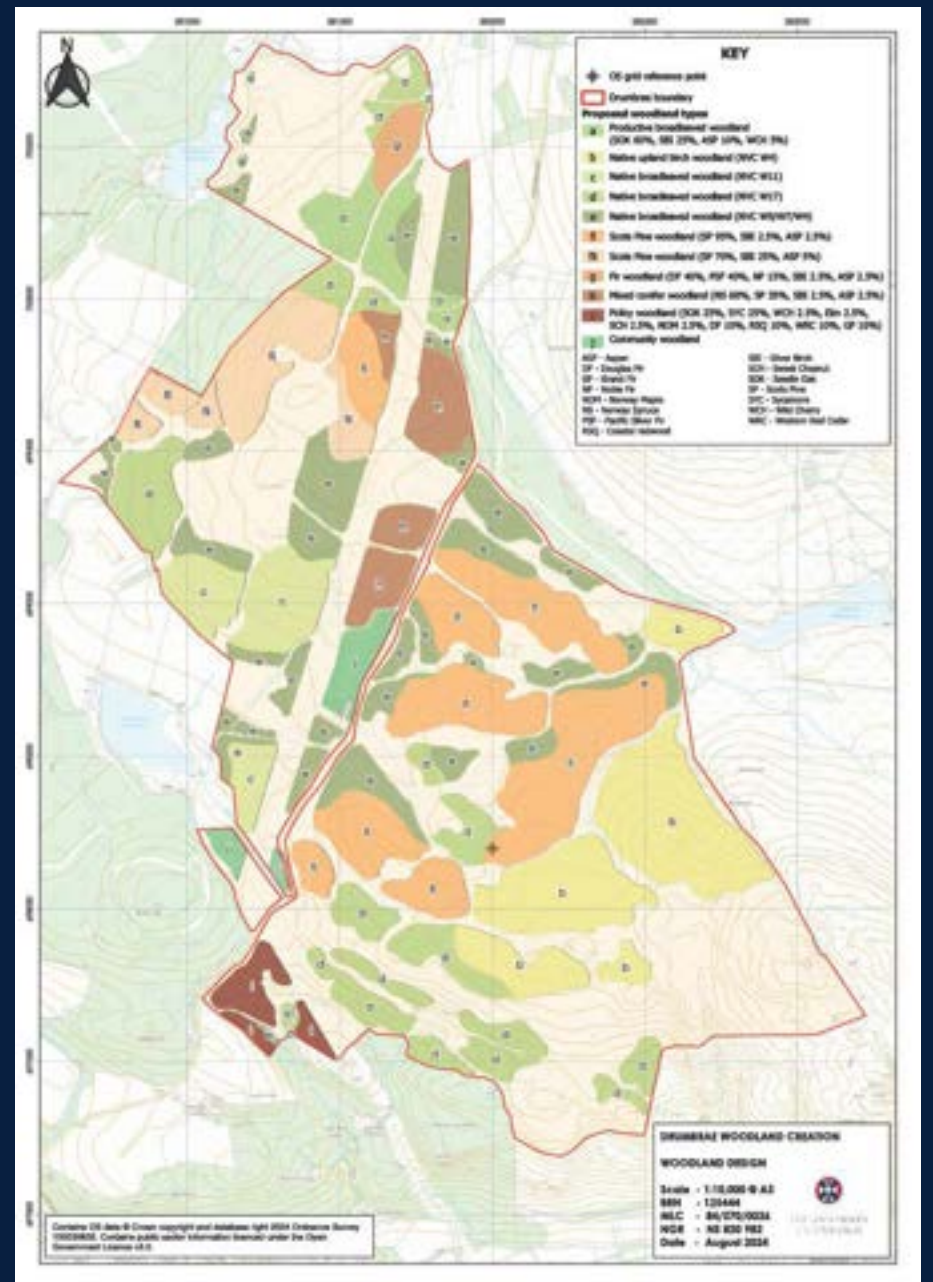


uoe_sustainability



edsust

Drumbrae



Drumbrae Summary

Total site area	431 ha	100%
Planted	237 ha	55%
Conservation grazing	16 ha	4%
Open	178 ha	41%
Total planting area	237 ha	100%
Native broadleaves	144 ha	61%
Mixed woodland	6 ha	4%
Scots Pine mix	71 ha	30%
Diverse conifer mix	15 ha	6%



Site operations – fencing



Ground preparation





Site operations coming up

- Tree planting
- Managing open habitats
- Ongoing monitoring





THE UNIVERSITY of EDINBURGH



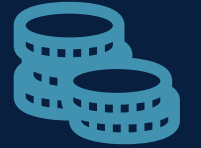
Forests and Peatland Project: Learning, teaching and research strategy

From 2023 until 2028

Learning, Teaching, and Research (LTR)

Field trips –
experiential
learning

Student studies –
dissertations/PhDs



Support monitoring
and reporting

Research projects



Living labs



Social Responsibility & Sustainability



uoe_sustainability



edsust

Research

Baselining – ecological, social, economic
Ongoing monitoring
Develop research projects and partnerships
PhD positions
Student projects



Community Benefits & Engagement



THE UNIVERSITY of EDINBURGH
Social Responsibility & Sustainability



Social Responsibility & Sustainability



uoe_sustainability



edsust

Drumbrae this year



Sticky catchfly and common rock-rose



THE UNIVERSITY of EDINBURGH
Social Responsibility & Sustainability



Social Responsibility & Sustainability



uoe_sustainability



edsust

Community Archaeology at Logie Homestead



THE UNIVERSITY of EDINBURGH
Social Responsibility & Sustainability



Social Responsibility & Sustainability



uoe_sustainability



edsust



Cultivation terraces are like raised beds.



THE UNIVERSITY of EDINBURGH
Social Responsibility & Sustainability



Social Responsibility & Sustainability



uoe_sustainability



edsust

Coming up next year

- Volunteer tree planting in March / April
- Volunteer wildflower planting in March
- Path maintenance on the Dumyat path during summer
- Educational visits and outreach activities





Story Map



THE UNIVERSITY
of EDINBURGH

Collection

Drumbrae

Get started



1 Introduction



2 Nature



3 Archaeology



4 Woodland Design



5 Community at Drumrae



THE UNIVERSITY of EDINBURGH
Social Responsibility & Sustainability



Social Responsibility & Sustainability



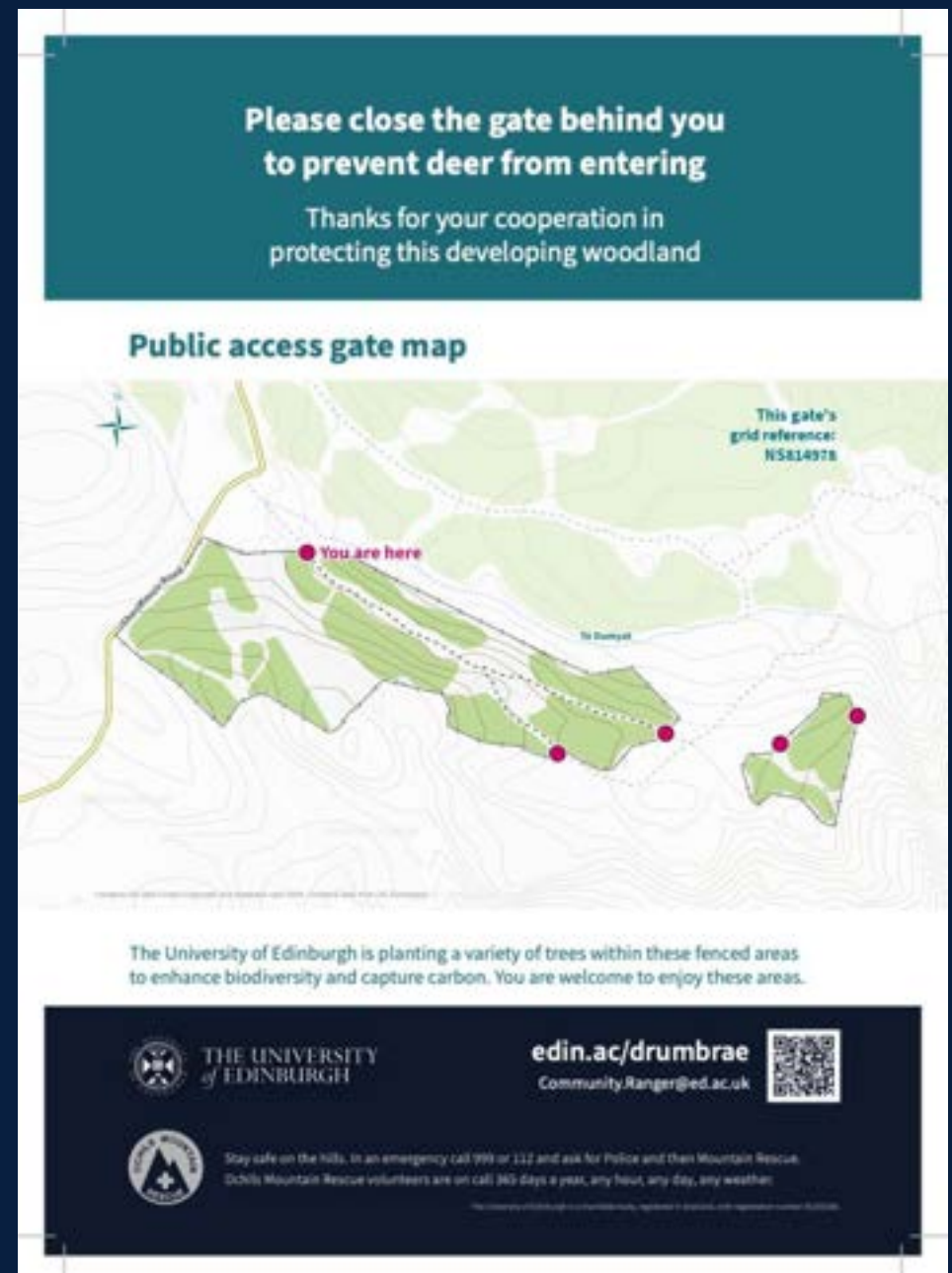
uoe_sustainability



edsust

Gate signage

We want your feedback!



THE UNIVERSITY of EDINBURGH
Social Responsibility & Sustainability



Social Responsibility & Sustainability



uoe_sustainability



edsust

Cocksburn Wood

Ideas,
aspirations,
uses.



THE UNIVERSITY of EDINBURGH
Social Responsibility & Sustainability



Social Responsibility & Sustainability



uoe_sustainability



edsust

Q&A

Community.Ranger@ed.ac.uk
edin.ac.uk/Drumbrae

 Social Responsibility & Sustainability

 UoE_Sustainability

 EdSust



THE UNIVERSITY of EDINBURGH
Social Responsibility & Sustainability



Social Responsibility & Sustainability



uoe_sustainability



edsust