



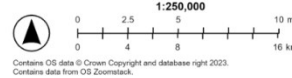
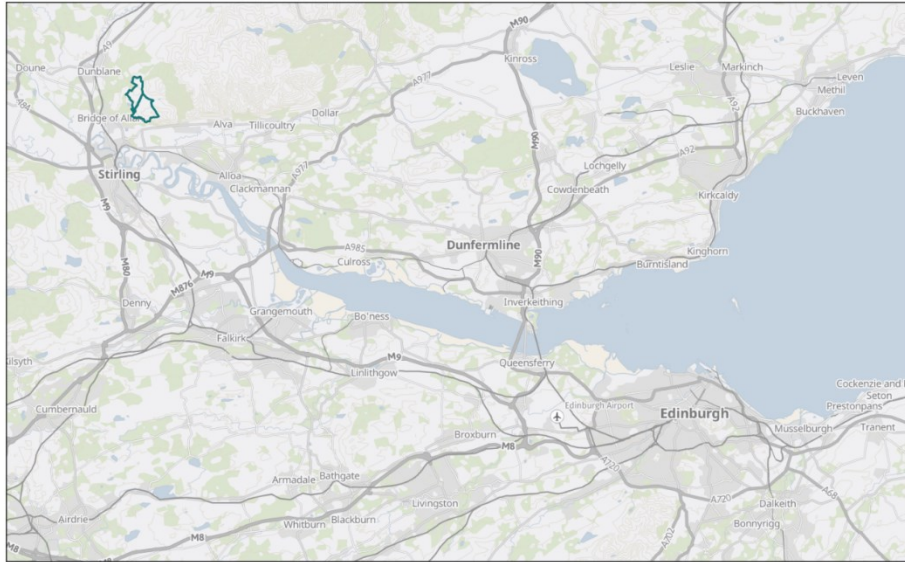
DRUMBRAE SITE INFORMATION FORM

FOREST AND PEATLAND PROGRAMME

A. ADDRESS: SITE LOCATION

DRUMBRAE, Bridge of Allan, FK9 4LT

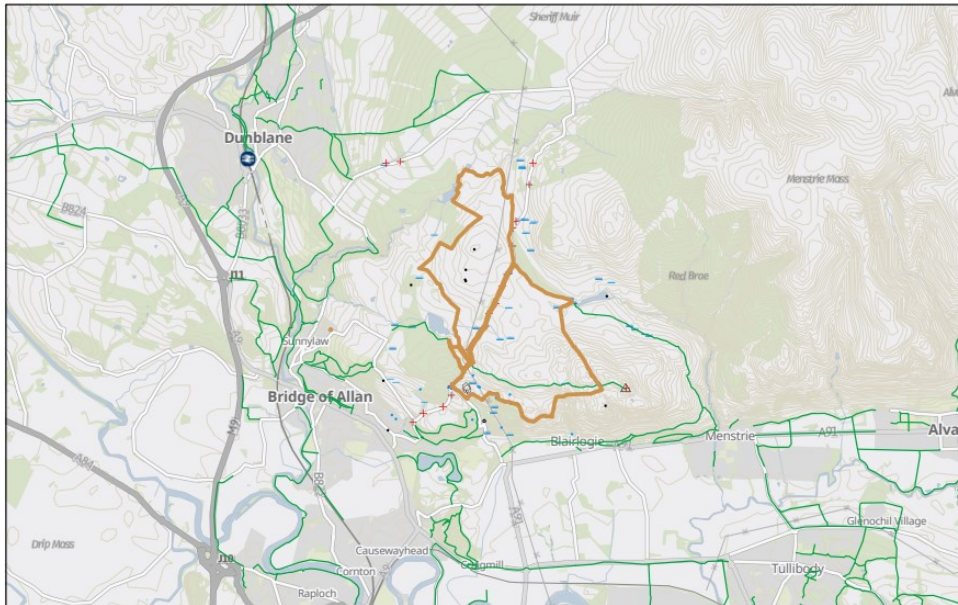
Map 1. Location map of Drumbrae site



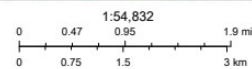
Contains OS data © Crown Copyright and database right 2022
Contains data from OS Zoomstack

Map 2. Close-up map of the Drumbrae location

Drumbrae Woodland Creation and Habitat Management Area



3/31/2023



Contains OS data © Crown Copyright and database right 2022
Contains data from OS Zoomstack



B. SITE ACCESS

Also, for all vehicles please be advised to approach from the Bridge of Allan rather than Blairlogie. The road from Blairlogie is an extremely narrow single lane, with limited pass points, so best avoided.

If you are traveling with a larger group, please keep in mind the road size and parking options. Due to the size of the roads and sharp bends, longer vehicles i.e., standard coaches, are not recommended. The use of a mini-coach is recommended.

A Coach company should be available to advise if the road is suitable for their vehicle.

Due to the limited space on the road for turning large vehicles, you would either need to [use FLS Pendreich car park](#) or more informal parking at Cockburn Woods (see site parking information).

C. TRANSPORT OPTIONS

Routes options from central Edinburgh to Dumyat, Drumbrae stie.

CAR/ MINIBUS:

Distance from Edinburgh, University of Edinburgh, Old College, EH8 9YL to the Drumbrae site, Dumyat car park: ~1 hr 8 min (45.9 miles) (by car) one way.

TRAIN:

Edinburgh Waverley station, to Bridge of Allan: ~1 hour. Note from the station to the site it is at least a 53-minute walk to the site, or you could a local taxi to reach the site. Estimated total travel time one way ~2 hours.

From the Bridge of Allan you would need to walk or take a taxi.

There are no public bus options to reach the Drumbrae site from the Bridge of Allan.

Edinburgh Waverley station, to Stirling: ~46 minutes journey by train, then a local bus will be needed and a walk. Estimated total travel time one way ~2 hours.

There are several bus options from Stirling train station. The closest bus stop to the Drumbrae site would be from the University of Stirling, main entrance, and walk from there.

- Bus 15a – take to ‘[Stirling] University Main Entrance’, Note: from here it is at least a 30-minute walk or you could take a local taxi to reach the site.
- Unilink - take to “[Stirling] University Main Entrance’. Note: from here you it at least a 30-minute walk or you need a local taxi to reach the site.
- Other bus options are also available.

If you’re a member of the University of Edinburgh please consult [the University of Edinburgh Sustainable travel policy](#) for further guidance.



D. LOCAL FACILITIES

Please note at the site there are no facilities i.e. there are no restrooms, shops or eateries.

The nearest facilities are in the local town.

The nearest general facilities are in the Bridge of Allan.

<https://www.visitscotland.com/info/towns-villages/bridge-of-allan-p235601>

The nearest public toilets are located at Bridge of Allan:

Well Road

Bridge of Allan

FK9 4DR

<https://www.stirling.gov.uk/community-life-and-leisure/public-toilets/list-of-the-public-toilets-in-stirling/bridge-of-allan/>

E. SITE PARKING INFORMATION

Official address DRUMBRAE, Bridge of Allan, FK9 4LT,

There are a few small car parks available including Dumyat, and our car park NS 815 986 called Cocksburn Wood .

W3W: Shelved.clutches.dinner

<https://goo.gl/maps/LCXQCRmeD7g3S4Zd8>

We cannot reserve parking spaces.

F. LOCAL ACCOMMODATION OPTIONS

There are no accommodation options at the site, the nearest accommodation options are at the Bridge of Allan and the surrounding area.

One of the best options for local accommodation is the Stirling Court Hotel. This also is a venue where rooms can be hired for events.

[Stirling Court Hotel: Hotel and Venue in Stirling](#)

For other local accommodation options ideas:

<https://www.discoverbridgeofallan.org/where-to-stay>

G. EXPERT ADVICE

Specialist advice may be required if your activities go beyond Scottish Outdoor Access Code.

H. SITE STORAGE OPTIONS

There are currently no storage options at the site.

I. WORKING AT HEIGHT

Working at height is not allowed unless permission has been granted in advance.

Any activities that include working at height i.e. above 3m, use of drones etc. must be stated in the site access form.

At the Drumbrae site, there are overhead electrical services. Please see the [constraints map](#).



J. WASTE FACILITIES

There are no waste disposal units at the site.

All waste generated by your visit must be removed from the sites and disposed of responsibly and sustainably off site.

The University of Edinburgh has a [Waste Strategy](#) which outlines the aim is to reduce the unnecessary use of raw materials, encourage reuse of products, and reduce waste to landfill through recycling, composting, or energy recovery.

K. PARTNER RESEARCH PRIORITIES (IF APPLICABLE)

Drumbrae is not a partnership site. However, through community consultations research priorities have been expressed. Please contact the FPP team for further information.

L. EMERGENCY INFORMATION

Please ensure you are familiar with emergency information before your visit, and have this to hand during your visit to the site.

Official address DRUMBRAE, Bridge of Allan, FK9 4LT,

Our car park NS 815 986 called Cocksburn Wood

W3W: Shelved.clutches.dinner

<https://goo.gl/maps/LCXQCRmeD7g3S4Zd8>

Entrances:

All entrances are off of the Sherrifmuir Road

- Our car park NS 815 986
- Entrance to main core path
- Entrance to path opposite our carpark NS815985
- Entrance to Dumyat informal path on east of site and gate above main core path NS813982 (foot /atv access only)
- Entrance to core path NS813 980
- Entrance to core path NS812 979 on West side of site above Pendreich to Cocksburn Reservoir
- Entrance to our track NS818 998 on North of site and to the West of Sheriffmuir Rd
- Entrance to core path NS819 994 outside of boundary to the North of our site and on the East of Sheriffmuir Rd.
- Small area of hardstanding NS817 991 to West of Sheriffmuir Road



Emergency Procedures:

In case of a serious incident when adjacent to a public road, phone 999 and request the appropriate emergency services.

Worksite location: Drumbrae/Dumyat adjacent to Sheriffmuir Road

Grid Reference: NS 815 986

Nearest postcode: FK9 4AR

Longitude: -3.9093304

Latitude: 56.165379

What3Words: defeat.estuaries.bin

Contact details for incidents:

In the case of any emergency (fire, crime, medical) please contact the emergency services: 999

Hospital address:

- Address of nearest Minor Injuries Unit: Stirling Health & Care Village, Livilands Gate, Stirling, FK8 2AU
- Nearest A&E Hospital department: Forth Valley Royal Hospital, Stirling Road, Larbert, FK5 4WR
- Phone number of A&E Hospital department: 01324 566 000

NHS 24 number: 111

Scottish Environmental Protection Agency (SEPA): 0800 80 70 60

Scottish Power: 105

Scottish Water: 0800 0778 778

Forestry Site Manager Lewis O'Dea: 07435 661299